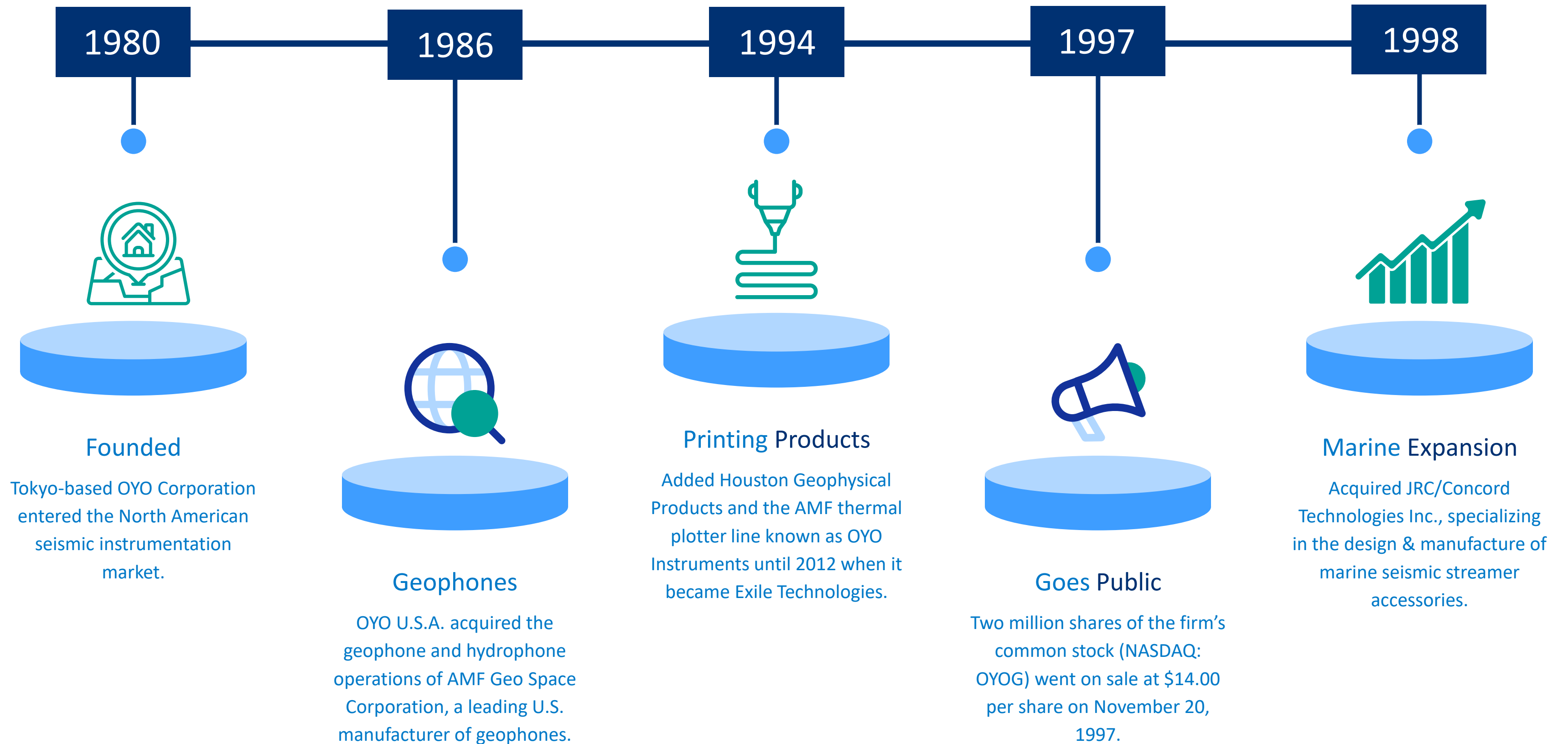




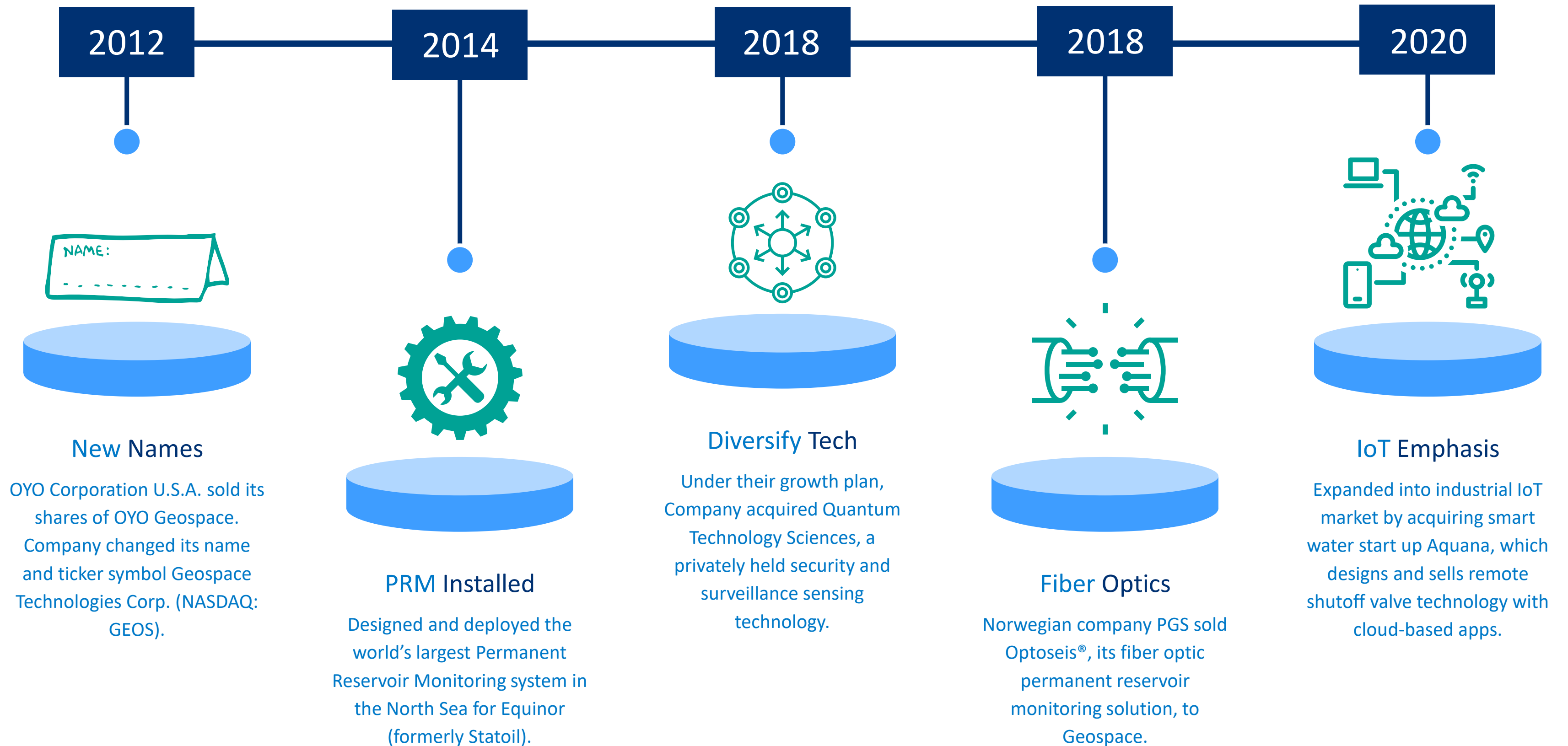
CONTRACT MANUFACTURING



Geospace Corporate History



Geospace Corporate History



BACKGROUND ON GEOSPACE

Founded in 1980 in Houston, Texas

Publicly Traded on NASDAQ - GEOS

Earned a reputation for paradigm-shifting approaches to seismic data acquisition

Known as an innovative force in the O&G industry's global search for energy reserves

Expanded to other markets including industrial sensing and IoT, smart water technologies and security and surveillance

400,000+ SF of USA Manufacturing

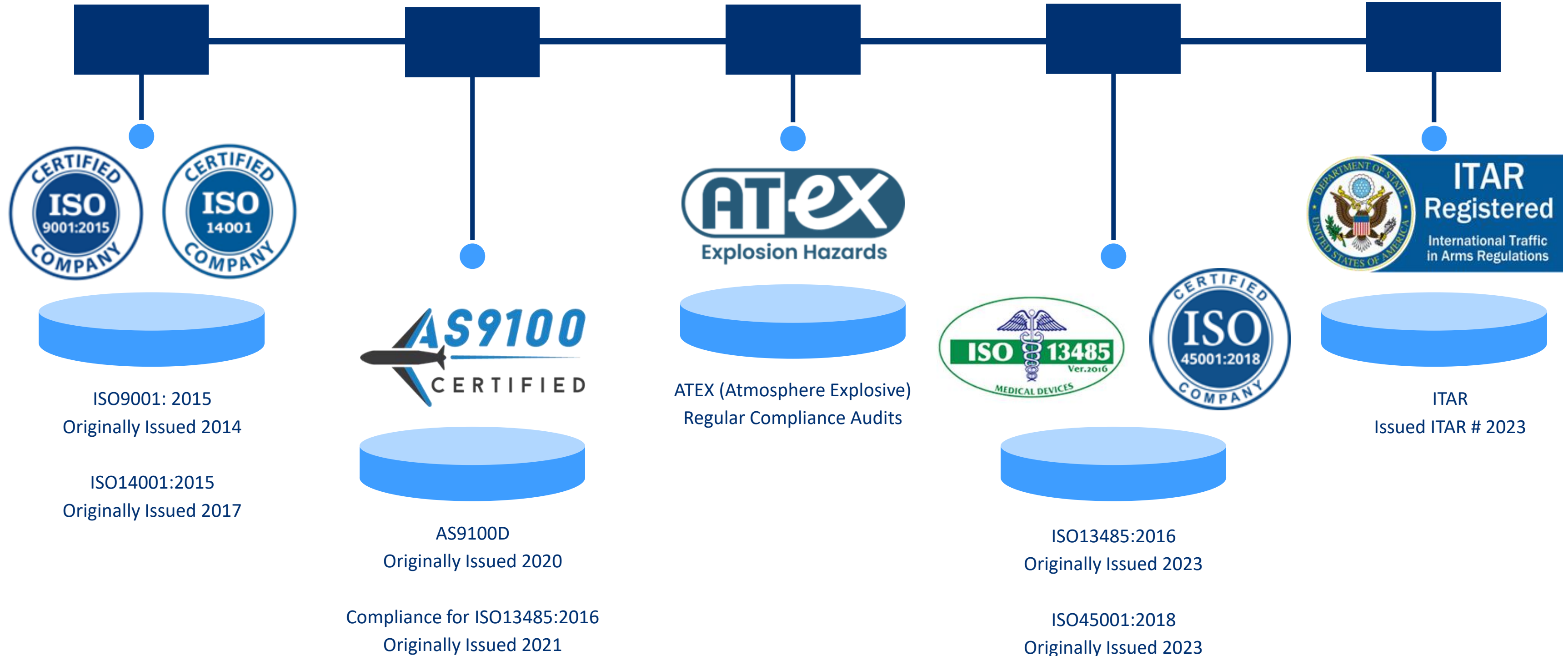
WORLD RENOWNED INNOVATOR IN VIBRATION SENSING TECHNOLOGIES

We're a company of solution-minded engineers, real-time algorithmic trailblazers, and robust industrial manufacturers.

We're dedicated to creating smarter, socially relevant products that deliver a safer, more connected world.



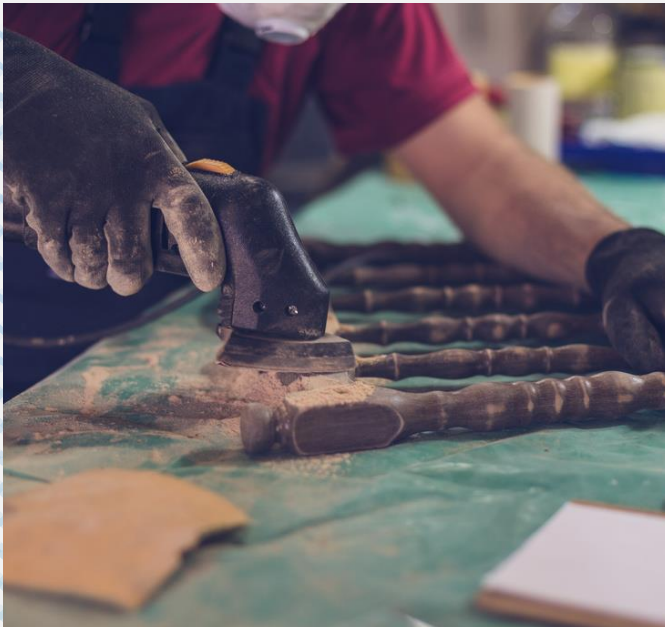
Contract Manufacturing Certifications



INDUSTRIES WE SERVE



SENSORS



RUGGEDIZED



AEROSPACE



INDUSTRIAL

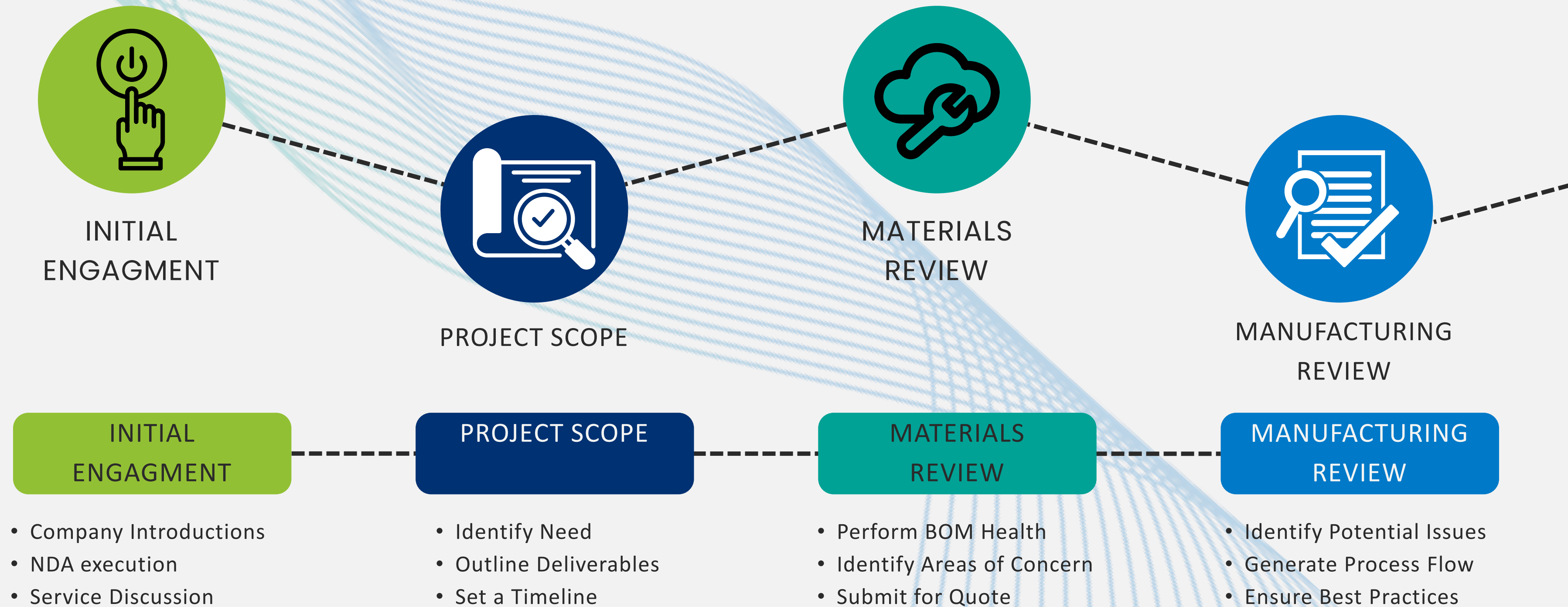


MEDICAL

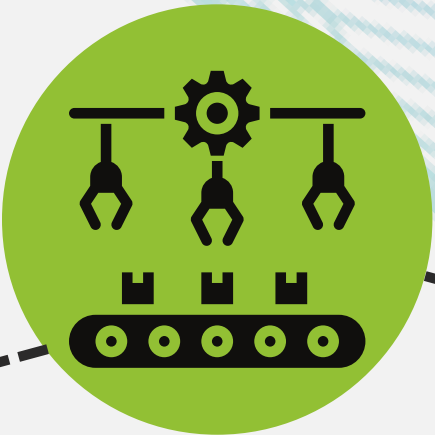
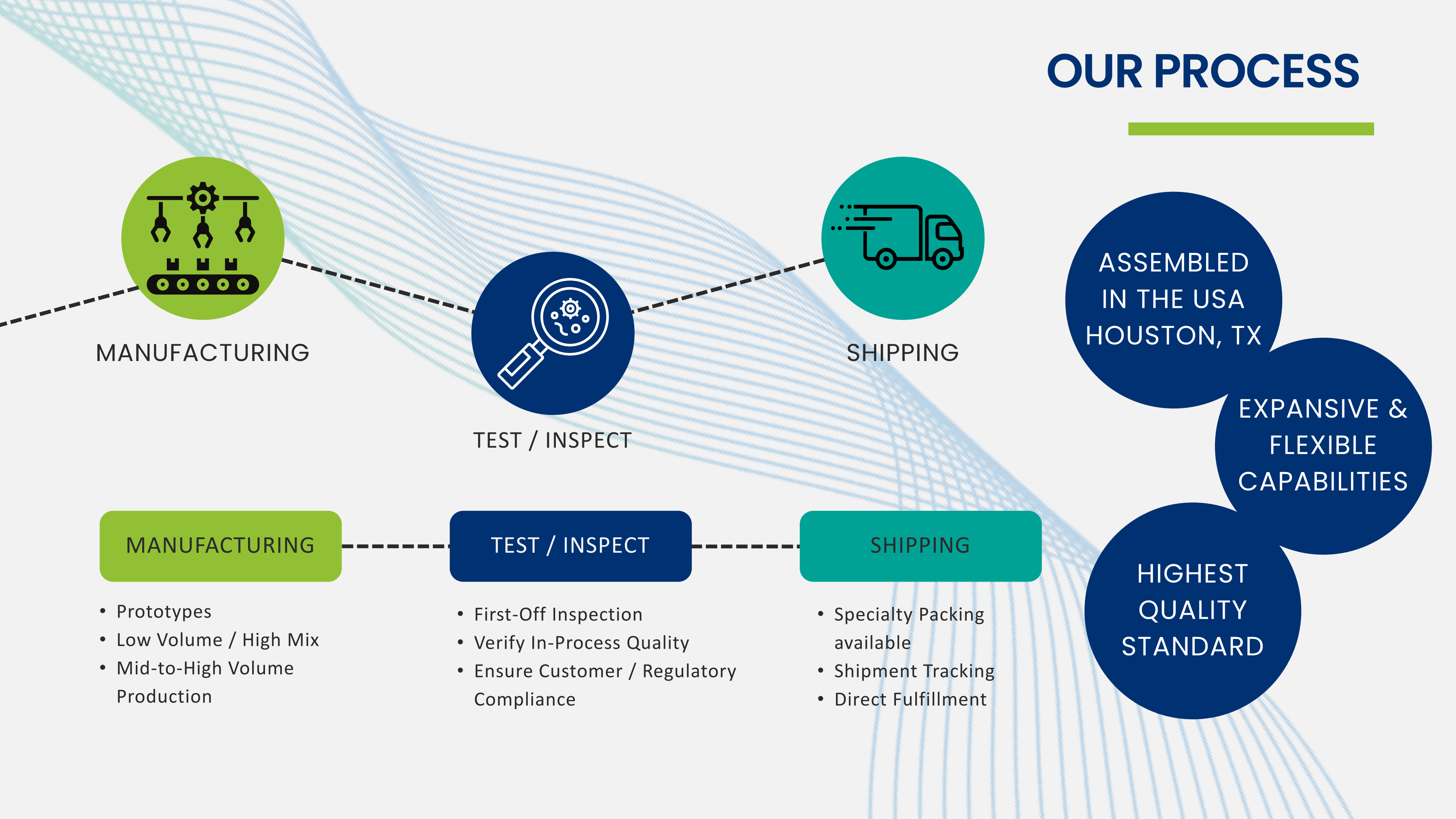


DEFENSE

OUR PROCESS



OUR PROCESS



MANUFACTURING



TEST / INSPECT



SHIPPING

MANUFACTURING

- Prototypes
- Low Volume / High Mix
- Mid-to-High Volume Production

TEST / INSPECT

- First-Off Inspection
- Verify In-Process Quality
- Ensure Customer / Regulatory Compliance

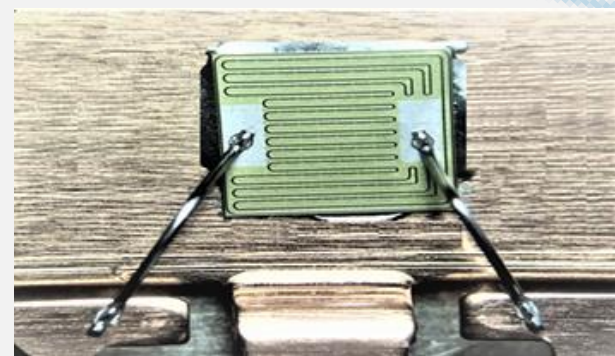
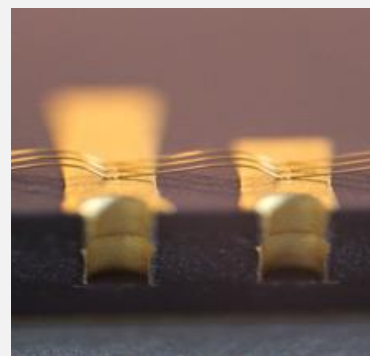
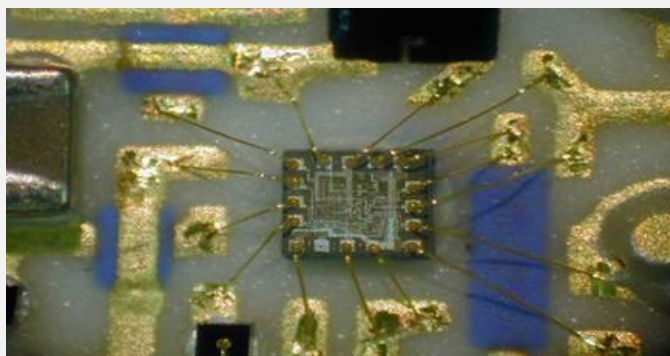
SHIPPING

- Specialty Packing available
- Shipment Tracking
- Direct Fulfillment

ASSEMBLED
IN THE USA
HOUSTON, TX

EXPANSIVE &
FLEXIBLE
CAPABILITIES

HIGHEST
QUALITY
STANDARD



Capabilities:

u-Electronics

CAPABILITY DETAILS

Micro-Electronics Manufacturing in Clean Rooms
Class 10K:

- Medical Device Manufacturing
- Aerospace Product Development
- Electronics Manufacturing

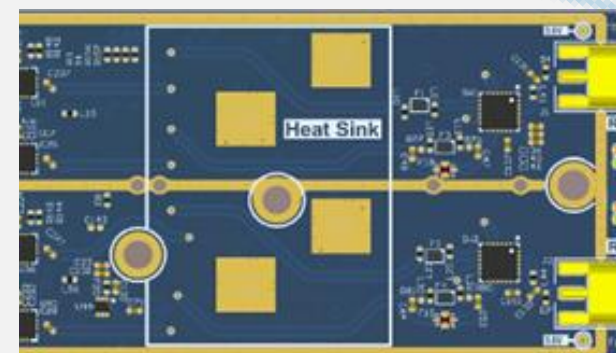
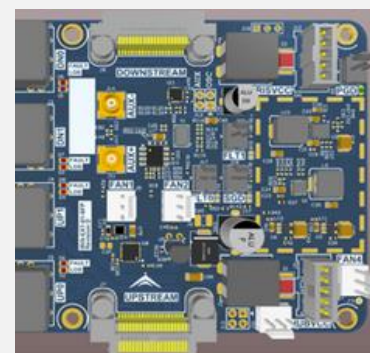
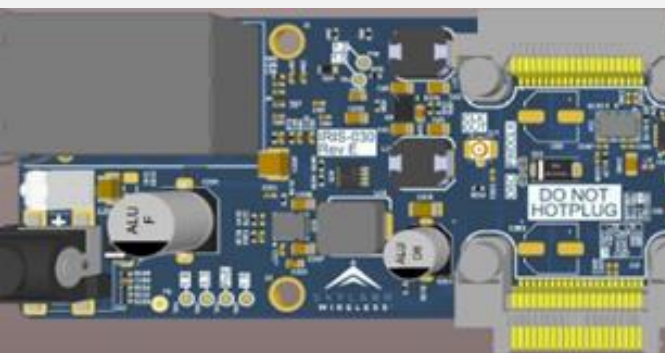
Class 100K:

- -Electronics Assembly
- -Packaging

Thermosonic Wire Bonding

Dry Etching and Sputtering

Dispense and Encapsulation



Capabilities:
PCBA



CAPABILITY DETAILS

First Article / First Piece

- Electrical Measurements and Marking Verification

Process Verification

- Unique Process for Each Assembly

Real Time Process Monitoring

- Utilizing 3D SPI and AOI
- In-Circuit Testing

Min/Max PCB Size:

3"x3" / 30"x20"

Min/Max Part Size:

01005 / 6.0"x6.0"

Min Comp Pitch:

0.3mm BGA/QFP



CAPABILITY DETAILS

Full Wire/Cable Capabilities

- Multi-Conductor
- Pairs/Triples/Quads/Paired Pairs
- Multiple Extrusion Lines

Harness Manufacturing

- Simple Crimp and Poke
- Complex Multi-Splice / Routing Options
- Over-Molded
- Fully Tested

Capabilities:

WIRE/CABLE



CAPABILITY DETAILS

Full Wire/Cable Capabilities

- Multi-Conductor
- Pairs/Triples/Quads/Paired Pairs
- Multiple Extrusion Lines

Harness Manufacturing

- Simple Crimp and Poke
- Complex Multi-Splice / Routing Options
- Over-Molded
- Fully Tested

Capabilities:

BOX/SYSTEM



CAPABILITY DETAILS

High-Precision CNC Machining Services

- CNC Milling
- CNC Turning
- Swiss Machining
- CMM Inspection



Capabilities:

MACHINING



Capabilities:

MOLDING

CAPABILITY DETAILS

Materials

- Polyethylene
- Polypropylene
- Nylons
- Custom Compounded plastics w/ Glass, Metal, or Mineral Fill

35+ Machines with multi-shift capabilities

In-House Tooling and Design

Shot Sizes up to 90 oz



Capabilities:
TEST

CAPABILITY DETAILS

Full-Service Test Offerings

- PCBA In Circuit
- Functional Test
- Cable Checker
- Burn-In

Get in Touch



Contact us to get more info

SALES

CM-SALES@GEOSPACE.COM

Engage Quotes
Place Orders
Obtain Status

PROGRAM MANAGEMENT

CM-PM@GEOSPACE.COM

Submit Changes
Product/Project Discussion
Obtain Status

QUALITY

CM-QUALITY@GEOSPACE.COM

Define Requirements
Discuss Yields
Maintain Regulatory
information

ENGINEERING

CM-ENG@GEOSPACE.COM

Discuss Special Requirements
Investigate Concerns

